



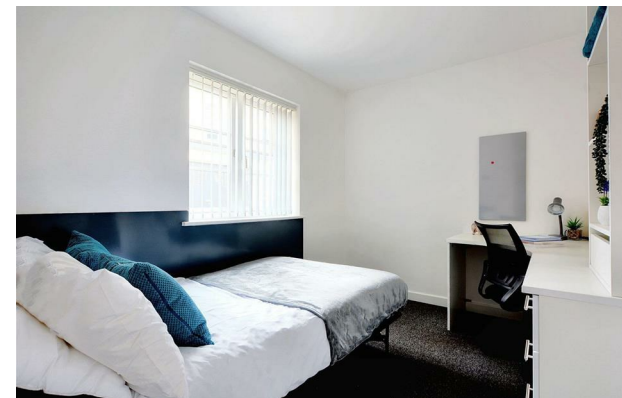
Oxford Street | | Leicester | LE1 5XA

£157 Per week



Oxford Street |  
Leicester | LE1 5XA  
£157 Per week

LEICESTER | STUDENT | SEPTEMBER



- Study space
- Bike storage
- High speed Wi-Fi
- Utilities including water and heating
- Strong community
- Upperton Road social spaces
- Onsite laundry facilities
- Contents insurance
- Excellent location
- Student only

Energy Efficiency Rating		Current	Potential
<i>Very energy efficient - lower running costs</i>			
(92 plus) A			
(81-91) B			
(69-80) C			
(55-68) D			
(39-54) E			
(21-38) F			
(1-20) G			
<i>Not energy efficient - higher running costs</i>			
<b>England &amp; Wales</b>		EU Directive 2002/91/EC	

Lower Ground Floor  
27 Ridley Place  
Newcastle upon Tyne  
Tyne and Wear  
NE1 8JN  
0191 6403450  
info@propertybynest.co.uk